

## IP3R-I Polyclonal Antibody

### Description

|                         |  |
|-------------------------|--|
| Product type            | Primary Antibody   |
| Code                    | BT-AP04604   |
| Host                    | Rabbit   |
| Isotype                 | IgG  |
| Size                    | 20ul, 50ul, 100ul  |
| Immunogen               | Synthesized peptide derived from IP3R-I . at AA range: 1700-1780   |
| Mol wt                  | 313945   |
| Species reactivity      | Human, Mouse, Rat  |
| Clonality               | Polyclonal   |
| Recommended application | WB, ELISA  |
| Concentration           | 1 mg/ml  |
| Full name               | IP3R-I Antibody  |
| Synonyms                | ITPR1; INSP3R1; Inositol 1,4,5-trisphosphate receptor type 1; IP3 receptor isoform 1; IP3R 1; InsP3R1; Type 1 inositol 1,4,5-trisphosphate receptor; Type 1 InsP3 receptor |

This product is for research use only, not for use in human, therapeutic or diagnostic procedure.

### Background

ITPR1 (inositol 1,4,5-trisphosphate receptor type 1) encodes an intracellular receptor for inositol 1,4,5-trisphosphate. Upon stimulation by inositol 1,4,5-trisphosphate, this receptor mediates calcium release from the endoplasmic reticulum. Mutations in ITPR1 cause spinocerebellar ataxia type 15, a disease associated with an heterogeneous group of cerebellar disorders. Multiple transcript variants have been identified for ITPR1.

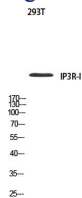
### Recommended Dilution

WB: 1: 500 - 1: 2000

ELISA: 1: 10000

Not yet tested in other applications.

### Images



Western blot analysis of 293T using IP3R-I antibody. Antibody was diluted at 1:500. Secondary antibody was diluted at 1:20000

### Storage

-20°C for one year