

S35A3 Rabbit Polyclonal Antibody

Description

Product type	Primary Antibody
Code	BT-AP04605
Host	Rabbit
Isotype	IgG
Size	20ul, 50ul, 100ul
Immunogen	Synthesized peptide derived from human S35A3
Mol wt	35750
Species reactivity	Human, Mouse, Rat
Clonality	Polyclonal
Recommended application	WB
Concentration	1 mg/ml
Full name	S35A3
Synonyms	S35A3

This product is for research use only, not for use in human, therapeutic or diagnostic procedure.

Background

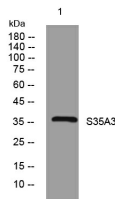
This gene encodes a UDP-N-acetylglucosamine transporter found in the golgi apparatus membrane. In cattle| a missense mutation in this gene causes complex vertebral malformation. Alternative splicing results in multiple transcript variants.

Recommended Dilution

WB: 1: 500 - 1: 2000

Not yet tested in other applications.

Images



Western blot analysis of lysates from 3T3 cells, primary antibody was diluted at 1:1000, 4°C overnight

Storage

-20°C for 1 year

501 Changsheng S Rd, Nanhu Dist, Jiaxing, Zhejiang, China

Tel: 86 21 31007137 | E-mail: save@bt-laboratory.com | www.bt-laboratory.com