

IP6K2 Polyclonal Antibody

Description

Product type	Primary Antibody
Code	BT-AP04606
Host	Rabbit
Isotype	IgG
Size	20ul, 50ul, 100ul
Immunogen	The antiserum was produced against synthesized peptide derived from human IP6K2. AA range:161-210
Mol wt	49186
Species reactivity	Human, Mouse, Rat
Clonality	Polyclonal
Recommended application	WB, IHC-p, IF, ELISA
Concentration	1 mg/ml
Full name	IP6K2 Antibody
Synonyms	IP6K2; IHPK2; TCCCIA00113; Inositol hexakisphosphate kinase 2; InsP6 kinase 2; P(i)-uptake stimulator; PiUS

This product is for research use only, not for use in human, therapeutic or diagnostic procedure.

Background

IP6K2 encodes Inositol hexakisphosphate kinase 2 that belongs to the inositol phosphokinase (IPK) family. This protein is likely responsible for the conversion of inositol hexakisphosphate (InsP6) to diphosphoinositol pentakisphosphate (InsP7/PP-InsP5). It may also convert 1,3,4,5,6-pentakisphosphate (InsP5) to PP-InsP4 and affect the growth suppressive and apoptotic activities of interferon-beta in some ovarian cancers. Alternative splicing results in multiple transcript variants encoding different isoforms.

Recommended Dilution

WB: 1: 500 - 1: 2000

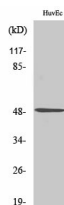
IHC: 1: 100 - 1: 300

IF: 1: 200 - 1: 1000

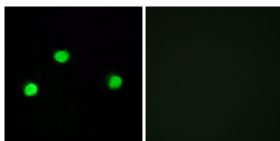
ELISA: 1: 40000

Not yet tested in other applications.

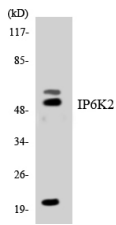
Images



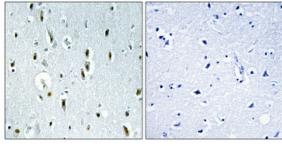
Western Blot analysis of various cells using IP6K2 Polyclonal Antibody cells nucleus.



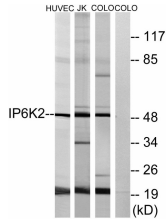
Immunofluorescence analysis of COS7 cells, using IP6K2 Antibody. The picture on the right is blocked with the synthesized peptide.



Western blot analysis of the lysates from K562 cells using IP6K2 antibody.



Immunohistochemical analysis of paraffin-embedded Human brain. Antibody was diluted at 1:100(4° overnight). High-pressure and temperature Tris-EDTA,pH8.0 was used for antigen retrieval. Negative contrl (right) obtained from antibody was pre-absorbed by immunogen peptide.



Western blot analysis of lysates from HUVEC, COLO, and Jurkat cells, using IP6K2 Antibody. The lane on the right is blocked with the synthesized peptide.

Storage

-20°C for one year

501 Changsheng S Rd, Nanhu Dist, Jiaxing, Zhejiang, China

Tel: 86 21 31007137 | E-mail: save@bt-laboratory.com | www.bt-laboratory.com