

S35B4 Rabbit Polyclonal Antibody

Description

Product type	Primary Antibody
Code	BT-AP04609
Host	Rabbit
Isotype	IgG
Size	20ul, 50ul, 100ul
Immunogen	Synthesized peptide derived from human S35B4
Mol wt	36410
Species reactivity	Human, Mouse
Clonality	Polyclonal
Recommended application	WB
Concentration	1 mg/ml
Full name	S35B4
Synonyms	S35B4

This product is for research use only, not for use in human, therapeutic or diagnostic procedure.

Background

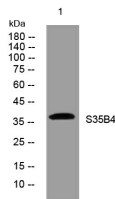
Glycosyltransferases such as SLC35B4 transport nucleotide sugars from the cytoplasm where they are synthesized to the Golgi apparatus where they are utilized in the synthesis of glycoproteins glycolipids and proteoglycans (Ashikov et al. 2005)

Recommended Dilution

WB: 1: 500 - 1: 2000

Not yet tested in other applications.

Images



Western blot analysis of lysates from MDA-MB cells, primary antibody was diluted at 1:1000, 4°C overnight

Storage

-20°C for 1 year

501 Changsheng S Rd, Nanhu Dist, Jiaxing, Zhejiang, China

Tel: 86 21 31007137 | E-mail: save@bt-laboratory.com | www.bt-laboratory.com