

IQGAP1 Polyclonal Antibody

Description

Product type	Primary Antibody
Code	BT-AP04615
Host	Rabbit
Isotype	IgG
Size	20ul, 50ul, 100ul
Immunogen	The antiserum was produced against synthesized peptide derived from human IQGAP1. AA range:247-296
Mol wt	189252
Species reactivity	Human, Mouse
Clonality	Polyclonal
Recommended application	WB, ELISA
Concentration	1 mg/ml
Full name	IQGAP1 Antibody
Synonyms	IQGAP1; KIAA0051; Ras GTPase-activating-like protein IQGAP1; p195

This product is for research use only, not for use in human, therapeutic or diagnostic procedure.

Background

IQGAP1 encodes a member of the IQGAP family. Ras GTPase-activating-like protein IQGAP1 contains four IQ domains, one calponin homology domain, one Ras-GAP domain and one WW domain. It interacts with components of the cytoskeleton, with cell adhesion molecules, and with several signaling molecules to regulate cell morphology and motility. Expression of the protein is upregulated by gene amplification in two gastric cancer cell lines.

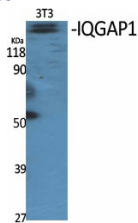
Recommended Dilution

WB: 1: 500 - 1: 2000

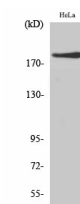
ELISA: 1: 20000

Not yet tested in other applications.

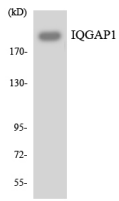
Images



Western Blot analysis of various cells using IQGAP1 Polyclonal Antibody diluted at 1:1000



Western Blot analysis of HeLa cells using IQGAP1 Polyclonal Antibody diluted at 1:1000



Western blot analysis of the lysates from K562 cells using IQGAP1 antibody.

Storage

-20°C for one year

501 Changsheng S Rd, Nanhu Dist, Jiaxing, Zhejiang, China

Tel: 86 21 31007137 | E-mail: save@bt-laboratory.com | www.bt-laboratory.com