

IRF3 Polyclonal Antibody

Description

Product type	Primary Antibody
Code	BT-AP04626
Host	Rabbit
Isotype	IgG
Size	20ul, 50ul, 100ul
Immunogen	Synthetic peptide from human protein at AA range: 279-352
Mol wt	47219
Species reactivity	Human
Clonality	Polyclonal
Recommended application	WB, IHC-p, ELISA
Concentration	1 mg/ml
Full name	IRF3 Antibody
Synonyms	Interferon regulatory factor 3 (IRF-3)

This product is for research use only, not for use in human, therapeutic or diagnostic procedure.

Background

IRF3 encodes a member of the interferon regulatory transcription factor (IRF) family. The encoded protein is found in an inactive cytoplasmic form that upon serine/threonine phosphorylation forms a complex with CREBBP. This complex translocates to the nucleus and activates the transcription of interferons alpha and beta, as well as other interferon-induced genes. Alternatively spliced transcript variants encoding multiple isoforms have been observed for this gene.

Recommended Dilution

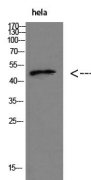
WB: 1: 500 - 2000

IHC-p: 1: 500 - 200

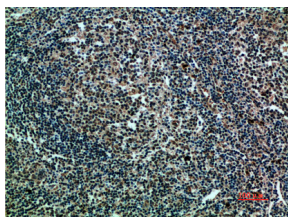
ELISA: 1: 10000 - 20000

Not yet tested in other applications.

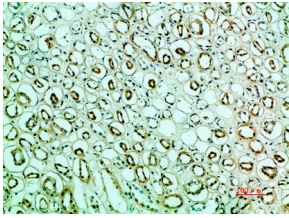
Images



Western blot analysis of HeLa Cell Lysate, antibody was diluted at 1:1000. Secondary antibody was diluted at 1:20000



Immunohistochemical analysis of paraffin-embedded human-tonsils, antibody was diluted at 1:200



Immunohistochemical analysis of paraffin-embedded human-kidney, antibody was diluted at 1:200

Storage

-20°C for one year

501 Changsheng S Rd, Nanhu Dist, Jiaxing, Zhejiang, China

Tel: 86 21 31007137 | E-mail: save@bt-laboratory.com | www.bt-laboratory.com