

IRF-3 Polyclonal Antibody

Description

Product type	Primary Antibody
Code	BT-AP04629
Host	Rabbit
Isotype	IgG
Size	20ul, 50ul, 100ul
Immunogen	The antiserum was produced against synthesized peptide derived from human IRF-3. AA range:352-401
Mol wt	47219
Species reactivity	Human
Clonality	Polyclonal
Recommended application	WB, IHC-p, ELISA
Concentration	1 mg/ml
Full name	IRF-3 Antibody
Synonyms	IRF3; Interferon regulatory factor 3; IRF-3

This product is for research use only, not for use in human, therapeutic or diagnostic procedure.

Background

IRF3 encodes a member of the interferon regulatory transcription factor (IRF) family. The encoded protein is found in an inactive cytoplasmic form that upon serine/threonine phosphorylation forms a complex with CREBBP. This complex translocates to the nucleus and activates the transcription of interferons alpha and beta, as well as other interferon-induced genes. Alternatively spliced transcript variants encoding multiple isoforms have been observed for this gene.

Recommended Dilution

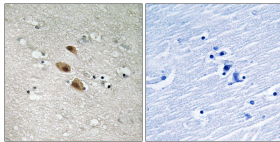
WB: 1: 500 - 1: 2000

IHC: 1: 100 - 1: 300

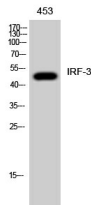
ELISA: 1: 20000

Not yet tested in other applications.

Images



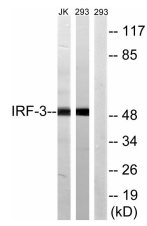
Immunohistochemistry analysis of paraffin-embedded human brain tissue, using IRF-3 Antibody. The picture on the right is blocked with the synthesized peptide.



Western Blot analysis of 453 cells using IRF-3 Polyclonal Antibody diluted at 1:1000



Western blot analysis of 293T lysis using IRF-3 antibody. Antibody was diluted at 1:1000



Western blot analysis of lysates from 293 and Jurkat cells, using IRF-3 Antibody. The lane on the right is blocked with the synthesized peptide.

Storage

-20°C for one year

501 Changsheng S Rd, Nanhu Dist, Jiaxing, Zhejiang, China

Tel: 86 21 31007137 | E-mail: save@bt-laboratory.com | www.bt-laboratory.com