

IRX1 Polyclonal Antibody

Description

Product type	Primary Antibody
Code	BT-AP04653
Host	Rabbit
Isotype	IgG
Size	20ul, 50ul, 100ul
Immunogen	The antiserum was produced against synthesized peptide derived from human IRX1. AA range:221-270
Mol wt	49621
Species reactivity	Human, Mouse
Clonality	Polyclonal
Recommended application	WB, IHC-p, IF, ELISA
Concentration	1 mg/ml
Full name	IRX1 Antibody
Synonyms	IRX1; IRXA1; Iroquois-class homeodomain protein IRX-1; Homeodomain protein IRXA1; Iroquois homeobox protein 1

This product is for research use only, not for use in human, therapeutic or diagnostic procedure.

Background

IRX1 (iroquois homeobox 1) encodes a member of the Iroquois homeobox protein family. Homeobox genes in this family are involved in pattern formation in the embryo. The gene product has been identified as a tumor suppressor in gastric (PMID: 21602894, 20440264) and head and neck cancers (PMID: 18559491). A pseudogene of IRX1 is located on chromosome 13.

Recommended Dilution

WB: 1: 500 - 1: 2000

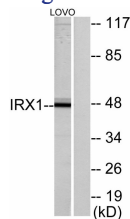
IHC: 1: 100 - 1: 300

IF: 1: 200 - 1: 1000

ELISA: 1: 40000

Not yet tested in other applications.

Images



Western blot analysis of lysates from LOVO cells, using IRX1 Antibody. The lane on the right is blocked with the synthesized peptide.

Storage

-20°C for one year