

Islet-2 Polyclonal Antibody

Description

Product type	Primary Antibody
Code	BT-AP04657
Host	Rabbit
Isotype	IgG
Size	20ul, 50ul, 100ul
Immunogen	The antiserum was produced against synthesized peptide derived from human ISL2. AA range:161-210
Mol wt	39768
Species reactivity	Human, Mouse, Rat
Clonality	Polyclonal
Recommended application	WB, IF, ELISA
Concentration	1 mg/ml
Full name	Islet-2 Antibody
Synonyms	ISL2; Insulin gene enhancer protein ISL-2; Islet-2

This product is for research use only, not for use in human, therapeutic or diagnostic procedure.

Background

ISL2 is a Protein Coding gene. Insulin gene enhancer protein ISL-2 is a transcriptional factor that defines subclasses of motoneurons that segregate into columns in the spinal cord and select distinct axon pathways. Among its related pathways are Neural Stem Cell Differentiation Pathways and Lineage-specific Markers. Gene Ontology (GO) annotations related to this gene include sequence-specific DNA binding. An important paralog of this gene is LHX4.

Recommended Dilution

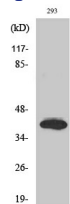
WB: 1: 500 - 1: 2000

IF: 1: 200 - 1: 1000

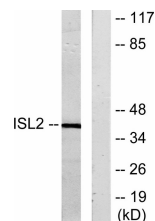
ELISA: 1: 20000

Not yet tested in other applications.

Images



Western Blot analysis of various cells using Islet-2 Polyclonal Antibody diluted at 1:500 cells nucleus.



Western blot analysis of lysates from 293 cells, using ISL2 Antibody. The lane on the right is blocked with the synthesized peptide.

Storage

-20°C for one year

501 Changsheng S Rd, Nanhu Dist, Jiaxing, Zhejiang, China

Tel: 86 21 31007137 | E-mail: save@bt-laboratory.com | www.bt-laboratory.com