

SC5AC Rabbit Polyclonal Antibody

Description

Product type	Primary Antibody
Code	BT-AP04661
Host	Rabbit
Isotype	IgG
Size	20ul, 50ul, 100ul
Immunogen	Synthesized peptide derived from human SC5AC
Mol wt	67980
Species reactivity	Human, Mouse
Clonality	Polyclonal
Recommended application	WB
Concentration	1 mg/ml
Full name	SC5AC
Synonyms	SC5AC

This product is for research use only, not for use in human, therapeutic or diagnostic procedure.

Background

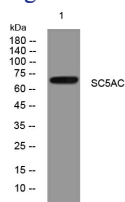
Normal blood lactate is maintained at about 1.5 mM and little filtered lactate is excreted in urine. Reabsorption of lactate is mediated by the low-affinity Na⁽⁺⁾-coupled lactate transporter SLC5A12 in the initial part of the proximal tubule and by the high-affinity Na⁽⁺⁾-coupled lactate transporter SLC5A8 (MIM 608044) in the distal proximal tubule (Gopal et al. | 2007

Recommended Dilution

WB: 1: 500 - 1: 2000

Not yet tested in other applications.

Images



Western blot analysis of lysates from U2OS cells, primary antibody was diluted at 1:1000, 4°C overnight

Storage

-20°C for 1 year

501 Changsheng S Rd, Nanhu Dist, Jiaxing, Zhejiang, China

Tel: 86 21 31007137 | E-mail: save@bt-laboratory.com | www.bt-laboratory.com