

IKappaB- Alpha Polyclonal Antibody

Description

Product type	Primary Antibody
Code	BT-AP04676
Host	Rabbit
Isotype	IgG
Size	20ul, 50ul, 100ul
Immunogen	Recombinant Protein of IκB-α
Mol wt	35609
Species reactivity	Human, Rat
Clonality	Polyclonal
Recommended application	WB, IHC-p
Concentration	1 mg/ml
Full name	IκappaB-alpha Antibody
Synonyms	NFKBIA; IKBA; MAD3; NFKBI; NF-kappa-B inhibitor alpha; I-kappa-B-alpha; IκB-alpha; IkappaBalpha; Major histocompatibility complex enhancer-binding protein MAD3

This product is for research use only, not for use in human, therapeutic or diagnostic procedure.

Background

NFKBIA encodes a member of the NF-kappa-B inhibitor family, which contain multiple ankrin repeat domains. The encoded protein interacts with REL dimers to inhibit NF-kappa-B/REL complexes which are involved in inflammatory responses. The encoded protein moves between the cytoplasm and the nucleus via a nuclear localization signal and CRM1-mediated nuclear export. Mutations in this gene have been found in ectodermal dysplasia anhidrotic with T-cell immunodeficiency autosomal dominant disease.

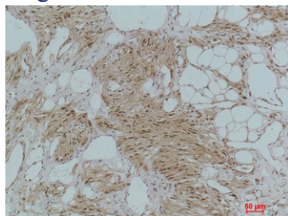
Recommended Dilution

WB: 1: 2000 - 5000

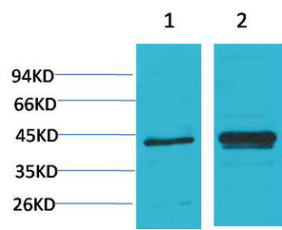
IHC: 1: 200 - 500

Not yet tested in other applications.

Images



Immunohistochemical analysis of paraffin-embedded Human Kidney Tissue using IκB-α Polyclonal Antibody.



Western blot analysis of 1) HeLa, 2) PC12 using IκB-α Polyclonal Antibody. Secondary antibody was diluted at 1:20000

Storage

-20°C for one year

501 Changsheng S Rd, Nanhu Dist, Jiaxing, Zhejiang, China

Tel: 86 21 31007137 | E-mail: save@bt-laboratory.com | www.bt-laboratory.com