

IkappaB-Beta Polyclonal Antibody

Description

Product type	Primary Antibody
Code	BT-AP04677
Host	Rabbit
Isotype	IgG
Size	20ul, 50ul, 100ul
Immunogen	The antiserum was produced against synthesized peptide derived from human IkappaB-beta. AA range:4-53
Mol wt	37771
Species reactivity	Human, Mouse
Clonality	Polyclonal
Recommended application	WB, ELISA
Concentration	1 mg/ml
Full name	IkappaB-beta Antibody
Synonyms	NFKBIB; IKBB; TRIP9; NF-kappa-B inhibitor beta; NF-kappa-BIB; I-kappa-B-beta; Ikb-B; Ikb-beta; IkappaBbeta; Thyroid receptor-interacting protein 9; TR-interacting protein 9; TRIP-9

This product is for research use only, not for use in human, therapeutic or diagnostic procedure.

Background

The protein encoded by NFKBIB belongs to the NF-kappa-B inhibitor family, which inhibit NF-kappa-B by complexing with, and trapping it in the cytoplasm. Phosphorylation of serine residues on these proteins by kinases marks them for destruction via the ubiquitination pathway, thereby allowing activation of the NF-kappa-B, which translocates to the nucleus to function as a transcription factor. Alternatively spliced transcript variants have been found for this gene.

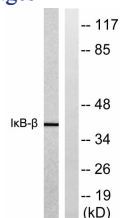
Recommended Dilution

WB: 1: 500 - 1: 2000

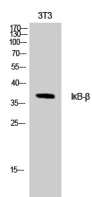
ELISA: 1: 5000

Not yet tested in other applications.

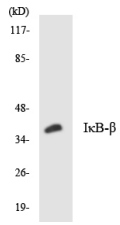
Images



Western blot analysis of lysates from NIH/3T3 cells, treated with TNF 20ng/ml 30', using IkappaB-beta Antibody. The lane on the right is blocked with the synthesized peptide.



Western Blot analysis of NIH-3T3 cells using IκB-β Polyclonal Antibody



Western blot analysis of the lysates from HT-29 cells using IκB-β antibody.

Storage

-20°C for one year

501 Changsheng S Rd, Nanhu Dist, Jiaxing, Zhejiang, China

Tel: 86 21 31007137 | E-mail: save@bt-laboratory.com | www.bt-laboratory.com