

SDS3 Rabbit Polyclonal Antibody

Description

Product type	Primary Antibody
Code	BT-AP04680
Host	Rabbit
Isotype	IgG
Size	20ul, 50ul, 100ul
Immunogen	Synthesized peptide derived from human SDS3
Mol wt	36080
Species reactivity	Human, Mouse
Clonality	Polyclonal
Recommended application	WB
Concentration	1 mg/ml
Full name	SDS3
Synonyms	SDS3

This product is for research use only, not for use in human, therapeutic or diagnostic procedure.

Background

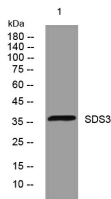
SDS3 is a subunit of the histone deacetylase (see HDAC1; MIM 601241)-dependent SIN3A (MIM 607776) corepressor complex (Fleischer et al., 2003)

Recommended Dilution

WB: 1: 500 - 1: 2000

Not yet tested in other applications.

Images



Western blot analysis of lysates from 293T cells, primary antibody was diluted at 1:1000, 4°C overnight

Storage

-20°C for 1 year

501 Changsheng S Rd, Nanhu Dist, Jiaxing, Zhejiang, China

Tel: 86 21 31007137 | E-mail: save@bt-laboratory.com | www.bt-laboratory.com