

## JAK2 Polyclonal Antibody

### Description

<b>Product type</b>	Primary Antibody
<b>Code</b>	BT-AP04689
<b>Host</b>	Rabbit
<b>Isotype</b>	IgG
<b>Size</b>	20ul, 50ul, 100ul
<b>Immunogen</b>	The antiserum was produced against synthesized peptide derived from human JAK2. AA range:541-590
<b>Mol wt</b>	130674
<b>Species reactivity</b>	Human, Mouse, Rat
<b>Clonality</b>	Polyclonal
<b>Recommended application</b>	WB, IHC-p, IF, ELISA
<b>Concentration</b>	1 mg/ml
<b>Full name</b>	JAK2 Antibody
<b>Synonyms</b>	JAK2; Tyrosine-protein kinase JAK2; Janus kinase 2; JAK-2

**This product is for research use only, not for use in human, therapeutic or diagnostic procedure.**

### Background

Tyrosine-protein kinase JAK2 is a protein tyrosine kinase involved in a specific subset of cytokine receptor signaling pathways. It has been found to be constitutively associated with the prolactin receptor and is required for responses to gamma interferon. Mice that do not express an active protein for this gene exhibit embryonic lethality associated with the absence of definitive erythropoiesis.

### Recommended Dilution

WB: 1: 500 - 1: 2000

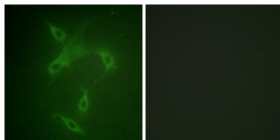
IHC: 1: 100 - 1: 300

IF: 1: 200 - 1: 1000

ELISA: 1: 5000

Not yet tested in other applications.

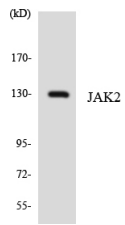
### Images



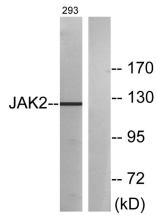
Immunofluorescence analysis of NIH/3T3 cells, using JAK2 Antibody. The picture on the right is blocked with the synthesized peptide.



Western Blot analysis of various cells using JAK2 Polyclonal Antibody diluted at 1:500



Western blot analysis of the lysates from COLO205 cells using JAK2 antibody.



Western blot analysis of lysates from 293 cells, treated with etoposide 25uM 24h, using JAK2 Antibody. The lane on the right is blocked with the synthesized peptide.

### Storage

-20°C for one year

501 Changsheng S Rd, Nanhu Dist, Jiaxing, Zhejiang, China

Tel: 86 21 31007137 | E-mail: [save@bt-laboratory.com](mailto:save@bt-laboratory.com) | [www.bt-laboratory.com](http://www.bt-laboratory.com)