

SELH Rabbit Polyclonal Antibody

Description

| | |
|-------------------------|---|
| Product type | Primary Antibody |
| Code | BT-AP04690 |
| Host | Rabbit |
| Isotype | IgG |
| Size | 20ul, 50ul, 100ul |
| Immunogen | Synthesized peptide derived from human SELH |
| Mol wt | 13420 |
| Species reactivity | Human, Mouse |
| Clonality | Polyclonal |
| Recommended application | WB |
| Concentration | 1 mg/ml |
| Full name | SELH |
| Synonyms | SELH |

This product is for research use only, not for use in human, therapeutic or diagnostic procedure.

Background

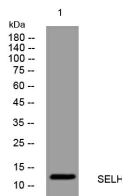
This gene encodes a nucleolar protein which belongs to the SelWTH family. It functions as an oxidoreductase and has been shown to protect neurons against UVB-induced damage by inhibiting apoptotic cell death pathways, promote mitochondrial biogenesis and mitochondrial function, and suppress cellular senescence through genome maintenance and redox regulation. This protein is a selenoprotein containing the rare amino acid selenocysteine (Sec) at its active site. Sec is encoded by the UGA codon which normally signals translation termination. The 3' UTRs of selenoprotein mRNAs contain a conserved stem-loop structure designated the Sec insertion sequence (SECIS) element that is necessary for the recognition of UGA as a Sec codon rather than as a stop signal. Alternatively spliced transcript variants have been found for this gene.

Recommended Dilution

WB: 1: 500 - 1: 2000

Not yet tested in other applications.

Images



Western blot analysis of lysates from KB cells, primary antibody was diluted at 1:1000, 4°C overnight

Storage

-20°C for 1 year