

Jamip2 Polyclonal Antibody

Description

Product type	Primary Antibody
Code	BT-AP04695
Host	Rabbit
Isotype	IgG
Size	20ul, 50ul, 100ul
Immunogen	The antiserum was produced against synthesized peptide derived from human JAKMIP2. AA range:761-810
Mol wt	94934
Species reactivity	Human
Clonality	Polyclonal
Recommended application	WB, IHC-p, IF, ELISA
Concentration	1 mg/ml
Full name	Jamip2 Antibody
Synonyms	JAKMIP2; JAMIP2; KIAA0555; NECC1; Janus kinase and microtubule-interacting protein 2; CTCL tumor antigen HD-CL-04; Neuroendocrine long coiled-coil protein 1

This product is for research use only, not for use in human, therapeutic or diagnostic procedure.

Background

The protein encoded by JAKMIP2 (janus kinase and microtubule interacting protein 2) is reported to be a component of the Golgi matrix. It may act as a golgin protein by negatively regulating transit of secretory cargo and by acting as a structural scaffold of the Golgi. Alternative splicing results in multiple transcript variants.

Recommended Dilution

WB: 1: 500 - 1: 2000

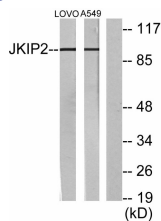
IHC: 1: 100 - 1: 300

IF: 1: 200 - 1: 1000

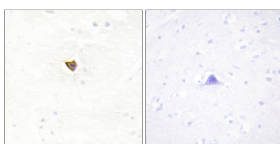
ELISA: 1: 10000

Not yet tested in other applications.

Images



Western blot analysis of lysates from LOVO and A549 cells, using JAKMIP2 Antibody. The lane on the right is blocked with the synthesized peptide.



Immunohistochemistry analysis of paraffin-embedded human brain tissue, using JAKMIP2 Antibody. The picture on the right is blocked with the synthesized peptide.

Storage

-20°C for one year

501 Changsheng S Rd, Nanhu Dist, Jiaxing, Zhejiang, China

Tel: 86 21 31007137 | E-mail: save@bt-laboratory.com | www.bt-laboratory.com