

SEM4G Rabbit Polyclonal Antibody

Description

Product type	Primary Antibody
Code	BT-AP04696
Host	Rabbit
Isotype	IgG
Size	20ul, 50ul, 100ul
Immunogen	Synthesized peptide derived from human SEM4G
Mol wt	92180
Species reactivity	Human, Mouse
Clonality	Polyclonal
Recommended application	WB
Concentration	1 mg/ml
Full name	SEM4G
Synonyms	SEM4G

This product is for research use only, not for use in human, therapeutic or diagnostic procedure.

Background

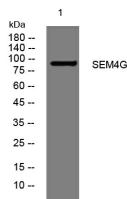
Semaphorins are a large family of conserved secreted and membrane associated proteins which possess a semaphorin (Sema) domain and a PSI domain (found in plexins| semaphorins and integrins) in the N-terminal extracellular portion. Based on sequence and structural similarities| semaphorins are put into eight classes: invertebrates contain classes 1 and 2| viruses have class V| and vertebrates contain classes 3-7. Semaphorins serve as axon guidance ligands via multimeric receptor complexes| some (if not all) containing plexin proteins. Multiple transcript variants encoding different isoforms have been found for this gene.

Recommended Dilution

WB: 1: 500 - 1: 2000

Not yet tested in other applications.

Images



Western blot analysis of lysates from MDA-MB cells, primary antibody was diluted at 1:1000, 4°C overnight

Storage

-20°C for 1 year