

JIK Polyclonal Antibody

Description

Product type	Primary Antibody
Code	BT-AP04698
Host	Rabbit
Isotype	IgG
Size	20ul, 50ul, 100ul
Immunogen	The antiserum was produced against synthesized peptide derived from human TAOK3. AA range:531-580
Mol wt	105406
Species reactivity	Human, Mouse, Rat
Clonality	Polyclonal
Recommended application	WB, ELISA
Concentration	1 mg/ml
Full name	JIK Antibody
Synonyms	TAOK3; DPK; JIK; KDS; MAP3K18; Serine/threonine-protein kinase TAO3; Cutaneous T-cell lymphoma-associated antigen HD-CL-09; CTCL-associated antigen HD-CL-09; Dendritic cell-derived protein kinase; JNK

This product is for research use only, not for use in human, therapeutic or diagnostic procedure.

Background

TAOK3 is a Protein Coding gene. Serine/threonine-protein kinase TAO3 acts as a regulator of the p38/MAPK14 stress-activated MAPK cascade and of the MAPK8/JNK cascade. Acts as an activator of the p38/MAPK14 stress-activated MAPK cascade. In response to DNA damage, involved in the G2/M transition DNA damage checkpoint by activating the p38/MAPK14 stress-activated MAPK cascade, probably by mediating phosphorylation of upstream MAP2K3 and MAP2K6 kinases. Inhibits basal activity of MAPK8/JNK cascade and diminishes its activation in response epidermal growth factor (EGF). Diseases associated with TAOK3 include kabuki syndrome 1. Among its related pathways are MAPK signaling pathway and p38 MAPK signaling pathway (Pathway Interaction Database). Gene Ontology (GO) annotations related to this gene include transferase activity, transferring phosphorus-containing groups and protein tyrosine kinase activity. An important paralog of this gene is TAOK1.

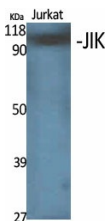
Recommended Dilution

WB: 1: 500 - 1: 2000

ELISA: 1: 10000

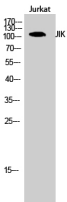
Not yet tested in other applications.

Images



Western Blot analysis of various cells using JIK Polyclonal Antibody

Western Blot analysis of Jurkat cells using JIK Polyclonal Antibody



Storage

-20°C for one year

501 Changsheng S Rd, Nanhu Dist, Jiaxing, Zhejiang, China
Tel: 86 21 31007137 | E-mail: save@bt-laboratory.com | www.bt-laboratory.com