

JTB Polyclonal Antibody

Description

Product type	Primary Antibody
Code	BT-AP04713
Host	Rabbit
Isotype	IgG
Size	20ul, 50ul, 100ul
Immunogen	The antiserum was produced against synthesized peptide derived from human JTB. AA range:10-59
Mol wt	16358
Species reactivity	Human
Clonality	Polyclonal
Recommended application	WB, ELISA
Concentration	1 mg/ml
Full name	JTB Antibody
Synonyms	JTB; HSPC222; Protein JTB; Jumping translocation breakpoint protein; Prostate androgen-regulated protein; PAR protein

This product is for research use only, not for use in human, therapeutic or diagnostic procedure.

Background

Required for normal cytokinesis during mitosis. Plays a role in the regulation of cell proliferation. May be a component of the chromosomal passenger complex (CPC), a complex that acts as a key regulator of mitosis. The CPC complex has essential functions at the centromere in ensuring correct chromosome alignment and segregation and is required for chromatin-induced microtubule stabilization and spindle assembly. Increases AURKB activity. Inhibits apoptosis induced by TGFBI (By similarity). Overexpression induces swelling of mitochondria and reduces mitochondrial membrane potential.

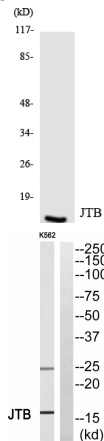
Recommended Dilution

WB: 1: 500 - 1: 2000

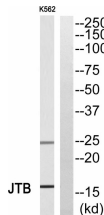
ELISA: 1: 5000

Not yet tested in other applications.

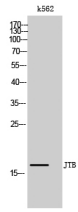
Images



Western blot analysis of the lysates from HUVEC cells using JTB antibody.



Western blot analysis of JTB Antibody. The lane on the right is blocked with the JTB peptide.



Western Blot analysis of k562 cells using JTB Polyclonal Antibody

Storage

-20°C for one year

501 Changsheng S Rd, Nanhu Dist, Jiaxing, Zhejiang, China

Tel: 86 21 31007137 | E-mail: save@bt-laboratory.com | www.bt-laboratory.com