

Jun B Polyclonal Antibody

Description

Product type	Primary Antibody
Code	BT-AP04716
Host	Rabbit
Isotype	IgG
Size	20ul, 50ul, 100ul
Immunogen	The antiserum was produced against synthesized peptide derived from human JunB. AA range:226-275
Mol wt	35879
Species reactivity	Human, Mouse
Clonality	Polyclonal
Recommended application	WB, IHC-p, IP, ELISA
Concentration	1 mg/ml
Full name	Jun B Antibody
Synonyms	JUNB; Transcription factor jun-B

This product is for research use only, not for use in human, therapeutic or diagnostic procedure.

Background

JunB is a basic region, leucine zipper (bZIP) transcription factor belonging to the Jun family that includes c-Jun and JunD. Jun family members homodimerize or heterodimerize with Fos and ATF proteins to form a functional transcription factor AP-1 (activator protein 1), whose activity is regulated by a variety of physiological and pathological stimuli such as growth factors, infections, and stress signals. While JunB sometimes antagonizes c-Jun transcriptional activity, it may functionally substitute for c-Jun during development in mice. JunB regulates hematopoietic stem cell number and plays an important role in the pathogenesis of chronic myelogenous leukemia (CML) and acute myeloid leukemia (AML).

Recommended Dilution

WB: 1: 500 - 1: 2000

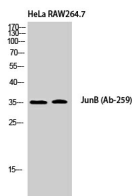
IHC: 1: 100 - 1: 300

ELISA: 1: 20000

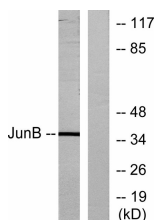
IP: 2 - 5 ug: mg lysate

Not yet tested in other applications.

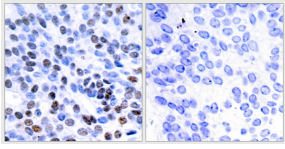
Images



Western Blot analysis of HeLa RAW264.7 cells using Jun B Polyclonal Antibody cells nucleus.



Western blot analysis of lysates from HeLa cells, using JunB Antibody. The lane on the right is blocked with the synthesized peptide.



Immunohistochemistry analysis of paraffin-embedded human breast carcinoma tissue, using JunB Antibody. The picture on the right is blocked with the synthesized peptide.

Storage

-20°C for one year

501 Changsheng S Rd, Nanhu Dist, Jiaxing, Zhejiang, China

Tel: 86 21 31007137 | E-mail: save@bt-laboratory.com | www.bt-laboratory.com