

## SGCG Rabbit Polyclonal Antibody

### Description

Product type	Primary Antibody
Code	BT-AP04718
Host	Rabbit
Isotype	IgG
Size	20ul, 50ul, 100ul
Immunogen	Synthesized peptide derived from human SGCG
Mol wt	32010
Species reactivity	Human, Mouse
Clonality	Polyclonal
Recommended application	WB
Concentration	1 mg/ml
Full name	SGCG
Synonyms	SGCG

This product is for research use only, not for use in human, therapeutic or diagnostic procedure.

### Background

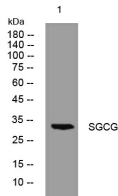
This gene encodes gamma-sarcoglycan| one of several sarcolemmal transmembrane glycoproteins that interact with dystrophin. The dystrophin-glycoprotein complex (DGC) spans the sarcolemma and is comprised of dystrophin| syntrophin| alpha- and beta-dystroglycans and sarcoglycans. The DGC provides a structural link between the subsarcolemmal cytoskeleton and the extracellular matrix of muscle cells. Defects in the encoded protein can lead to early onset autosomal recessive muscular dystrophy| in particular limb-girdle muscular dystrophy| type 2C (LGMD2C).

### Recommended Dilution

WB: 1: 500 - 1: 2000

Not yet tested in other applications.

### Images



Western blot analysis of lysates from K562 cells, primary antibody was diluted at 1:1000, 4°C overnight

### Storage

-20°C for 1 year