

## SGPL1 Rabbit Polyclonal Antibody

### Description

Product type	Primary Antibody
Code	BT-AP04721
Host	Rabbit
Isotype	IgG
Size	20ul, 50ul, 100ul
Immunogen	Synthesized peptide derived from human SGPL1
Mol wt	N/A
Species reactivity	Human, Mouse, Rat
Clonality	Polyclonal
Recommended application	WB
Concentration	1 mg/ml
Full name	SGPL1
Synonyms	SGPL1; Sphingosine-1-phosphate lyase 1; S1PL; SP-lyase 1; SPL 1; hSPL; EC 4.1.2.27; Sphingosine-1-phosphate aldolase

This product is for research use only, not for use in human, therapeutic or diagnostic procedure.

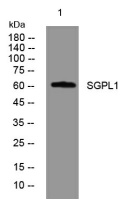
### Background

#### Recommended Dilution

WB: 1: 500 - 1: 2000

Not yet tested in other applications.

### Images



### Storage

-20°C for 1 year

501 Changsheng S Rd, Nanhu Dist, Jiaxing, Zhejiang, China

Tel: 86 21 31007137 | E-mail: [save@bt-laboratory.com](mailto:save@bt-laboratory.com) | [www.bt-laboratory.com](http://www.bt-laboratory.com)