

## KALIG-1 Polyclonal Antibody

### Description

<b>Product type</b>	Primary Antibody
<b>Code</b>	BT-AP04730
<b>Host</b>	Rabbit
<b>Isotype</b>	IgG
<b>Size</b>	20ul, 50ul, 100ul
<b>Immunogen</b>	The antiserum was produced against synthesized peptide derived from human KAL1. AA range:151-200
<b>Mol wt</b>	76112
<b>Species reactivity</b>	Human
<b>Clonality</b>	Polyclonal
<b>Recommended application</b>	WB, ELISA
<b>Concentration</b>	1 mg/ml
<b>Full name</b>	KALIG-1 Antibody
<b>Synonyms</b>	KAL1; ADMLX; KAL; KALIG1; Anosmin-1; Adhesion molecule-like X-linked; Kallmann syndrome protein

This product is for research use only, not for use in human, therapeutic or diagnostic procedure.

### Background

Mutations in KAL1 cause the X-linked Kallmann syndrome. Anosmin-1 is similar in sequence to proteins known to function in neural cell adhesion and axonal migration. In addition, this cell surface protein is N-glycosylated and may have anti-protease activity.

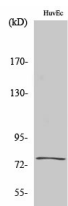
### Recommended Dilution

WB: 1: 500 - 1: 2000

ELISA: 1: 10000

Not yet tested in other applications.

### Images



Western Blot analysis of various cells using KALIG-1 Polyclonal Antibody

### Storage

-20°C for one year