

Kanadaptin Polyclonal Antibody

Description

Product type	Primary Antibody
Code	BT-AP04732
Host	Rabbit
Isotype	IgG
Size	20ul, 50ul, 100ul
Immunogen	The antiserum was produced against synthesized peptide derived from human NADAP. AA range:421-470
Mol wt	88814
Species reactivity	Human, Mouse
Clonality	Polyclonal
Recommended application	WB, IHC-p, IF, ELISA
Concentration	1 mg/ml
Full name	Kanadaptin Antibody
Synonyms	SLC4A1AP; HLC3; Kanadaptin; Human lung cancer oncogene 3 protein; HLC-3; Kidney anion exchanger adapter protein; Solute carrier family 4 anion exchanger member 1 adapter protein

This product is for research use only, not for use in human, therapeutic or diagnostic procedure.

Background

An important paralog of SLC4A1AP is PPP1R8. Kanadaptin (kidney anion exchanger adaptor protein) is a widely expressed protein, shown previously to interact with the cytosolic domain of mouse Cl-/HCO₃- anion exchanger 1 (kAE1) but not erythroid AE1 (eAE1) by a yeast-two hybrid assay. Kanadaptin was co-localized with kAE1 in intracellular membranes but not at the plasma membrane in alpha-intercalated cells of rabbit kidney. It was suggested that kanadaptin is an adaptor protein or chaperone involved in targeting kAE1 to the plasma membrane.

Recommended Dilution

WB: 1: 500 - 1: 2000

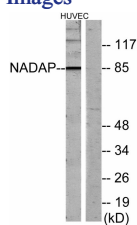
IHC: 1: 100 - 1: 300

IF: 1: 200 - 1: 1000

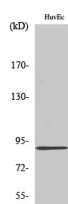
ELISA: 1: 10000

Not yet tested in other applications.

Images



Western blot analysis of lysates from HUVEC cells, using NADAP Antibody. The lane on the right is blocked with the synthesized peptide.



Western Blot analysis of various cells using Kanadaptin Polyclonal Antibody diluted at 1:2000

Storage

-20°C for one year

501 Changsheng S Rd, Nanhu Dist, Jiaxing, Zhejiang, China

Tel: 86 21 31007137 | E-mail: save@bt-laboratory.com | www.bt-laboratory.com