

SHPRH Rabbit Polyclonal Antibody

Description

Product type	Primary Antibody
Code	BT-AP04735
Host	Rabbit
Isotype	IgG
Size	20ul, 50ul, 100ul
Immunogen	Synthesized peptide derived from human SHPRH
Mol wt	185130
Species reactivity	Human, Mouse
Clonality	Polyclonal
Recommended application	WB
Concentration	1 mg/ml
Full name	SHPRH
Synonyms	SHPRH

This product is for research use only, not for use in human, therapeutic or diagnostic procedure.

Background

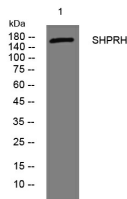
SHPRH is a ubiquitously expressed protein that contains motifs characteristics of several DNA repair proteins| transcription factors| and helicases. SHPRH is a functional homolog of *S. cerevisiae* RAD5 (Unk et al.| 2006

Recommended Dilution

WB: 1: 500 - 1: 2000

Not yet tested in other applications.

Images



Western blot analysis of lysates from MDA-MB cells, primary antibody was diluted at 1:1000, 4°C overnight

Storage

-20°C for 1 year

501 Changsheng S Rd, Nanhu Dist, Jiaxing, Zhejiang, China

Tel: 86 21 31007137 | E-mail: save@bt-laboratory.com | www.bt-laboratory.com