

K-cadherin Polyclonal Antibody

Description

Product type	Primary Antibody
Code	BT-AP04740
Host	Rabbit
Isotype	IgG
Size	20ul, 50ul, 100ul
Immunogen	The antiserum was produced against synthesized peptide derived from human CDH10. AA range:201-250
Mol wt	88451
Species reactivity	Human, Mouse
Clonality	Polyclonal
Recommended application	IF, ELISA
Concentration	1 mg/ml
Full name	K-cadherin Antibody
Synonyms	CDH10; Cadherin-10; T2-cadherin

This product is for research use only, not for use in human, therapeutic or diagnostic procedure.

Background

Cadherins are calcium dependent cell adhesion proteins. They preferentially interact with themselves in a homophilic manner in connecting cells; cadherins may thus contribute to the sorting of heterogeneous cell types. Cadherin is highly expressed in brain, cerebellum, and kidney. Lung, pancreas, and gastric mucosa show a weak expression. Also expressed in certain liver and kidney carcinomas.

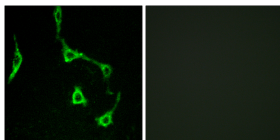
Recommended Dilution

IF: 1: 200 - 1: 1000

ELISA: 1: 40000

Not yet tested in other applications.

Images



Immunofluorescence analysis of LOVO cells, using CDH10 Antibody. The picture on the right is blocked with the synthesized peptide.

Storage

-20°C for one year

501 Changsheng S Rd, Nanhu Dist, Jiaxing, Zhejiang, China

Tel: 86 21 31007137 | E-mail: save@bt-laboratory.com | www.bt-laboratory.com