

SIL1 Rabbit Polyclonal Antibody

Description

Product type	Primary Antibody
Code	BT-AP04749
Host	Rabbit
Isotype	IgG
Size	20ul, 50ul, 100ul
Immunogen	Synthesized peptide derived from human SIL1
Mol wt	50710
Species reactivity	Human, Mouse, Rat
Clonality	Polyclonal
Recommended application	WB
Concentration	1 mg/ml
Full name	SIL1
Synonyms	SIL1

This product is for research use only, not for use in human, therapeutic or diagnostic procedure.

Background

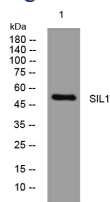
This gene encodes a resident endoplasmic reticulum (ER) N-linked glycoprotein with an N-terminal ER targeting sequence| 2 putative N-glycosylation sites| and a C-terminal ER retention signal. This protein functions as a nucleotide exchange factor for another unfolded protein response protein. Mutations in this gene have been associated with Marinesco-Sjogren syndrome. Alternate transcriptional splice variants have been characterized.

Recommended Dilution

WB: 1: 500 - 1: 2000

Not yet tested in other applications.

Images



Western blot analysis of lysates from A431 cells, primary antibody was diluted at 1:1000, 4°C overnight

Storage

-20°C for 1 year