

SIM1 Rabbit Polyclonal Antibody

Description

Product type	Primary Antibody
Code	BT-AP04750
Host	Rabbit
Isotype	IgG
Size	20ul, 50ul, 100ul
Immunogen	Synthesized peptide derived from human SIM1
Mol wt	N/A
Species reactivity	Human, Mouse
Clonality	Polyclonal
Recommended application	WB
Concentration	1 mg/ml
Full name	SIM1
Synonyms	SIM1; Single-minded homolog 1; Class E basic helix-loop-helix protein 14; bHLHe14

This product is for research use only, not for use in human, therapeutic or diagnostic procedure.

Background

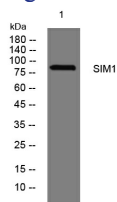
SIM1 and SIM2 genes are Drosophila single-minded (sim) gene homologs. SIM1 transcript was detected only in fetal kidney out of various adult and fetal tissues tested. Since the sim gene plays an important role in Drosophila development and has peak levels of expression during the period of neurogenesis[it was proposed that the human SIM gene is a candidate for involvement in certain dysmorphic features (particularly the facial and skull characteristics)] abnormalities of brain development] and/or mental retardation of Down syndrome.

Recommended Dilution

WB: 1: 500 - 1: 2000

Not yet tested in other applications.

Images



Western blot analysis of lysates from A549 cells, primary antibody was diluted at 1:1000, 4°C overnight

Storage

-20°C for 1 year