

KCNF1 Polyclonal Antibody

Description

Product type	Primary Antibody
Code	BT-AP04755
Host	Rabbit
Isotype	IgG
Size	20ul, 50ul, 100ul
Immunogen	The antiserum was produced against synthesized peptide derived from human KCNF1. AA range:191-240
Mol wt	55584
Species reactivity	Human, Mouse
Clonality	Polyclonal
Recommended application	WB, ELISA
Concentration	1 mg/ml
Full name	KCNF1 Antibody
Synonyms	KCNF1; Potassium voltage-gated channel subfamily F member 1; Voltage-gated potassium channel subunit Kv5.1; kH1

This product is for research use only, not for use in human, therapeutic or diagnostic procedure.

Background

Voltage-gated potassium (Kv) channels represent the most complex class of voltage-gated ion channels from both functional and structural standpoints. Their diverse functions include regulating neurotransmitter release, heart rate, insulin secretion, neuronal excitability, epithelial electrolyte transport, smooth muscle contraction, and cell volume. This gene encodes a member of the potassium channel, voltage-gated, subfamily F. KCNF1 is intronless and expressed in all tissues tested, including the heart, skeletal muscle, brain, kidney, and pancreas.

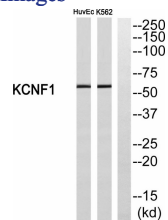
Recommended Dilution

WB: 1: 500 - 1: 2000

ELISA: 1: 5000

Not yet tested in other applications.

Images



Western blot analysis of KCNF1 Antibody. The lane on the right is blocked with the KCNF1 peptide.

Storage

-20°C for one year