

KCNH1 Polyclonal Antibody

Description

Product type	Primary Antibody
Code	BT-AP04759
Host	Rabbit
Isotype	IgG
Size	20ul, 50ul, 100ul
Immunogen	The antiserum was produced against synthesized peptide derived from human KCNH1. AA range:720-769
Mol wt	111423
Species reactivity	Human, Mouse, Rat
Clonality	Polyclonal
Recommended application	WB, ELISA
Concentration	1 mg/ml
Full name	KCNH1 Antibody
Synonyms	KCNH1; EAG; EAG1; Potassium voltage-gated channel subfamily H member 1; Ether-a-go-go potassium channel 1; EAG channel 1; h-eag; hEAG1; Voltage-gated potassium channel subunit Kv10.1

This product is for research use only, not for use in human, therapeutic or diagnostic procedure.

Background

Voltage-gated potassium (Kv) channels represent the most complex class of voltage-gated ion channels from both functional and structural standpoints. Their diverse functions include regulating neurotransmitter release, heart rate, insulin secretion, neuronal excitability, epithelial electrolyte transport, smooth muscle contraction, and cell volume. KCNH1 encodes a member of the potassium channel, voltage-gated, subfamily H. Potassium voltage-gated channel subfamily H member 1 is a pore-forming (alpha) subunit of a voltage-gated non-inactivating delayed rectifier potassium channel. It is activated at the onset of myoblast differentiation. The gene is highly expressed in brain and in myoblasts. Overexpression of the gene may confer a growth advantage to cancer cells and favor tumor cell proliferation. Alternative splicing of this gene results in two transcript variants encoding distinct isoforms.

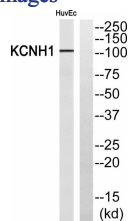
Recommended Dilution

WB: 1: 500 - 1: 2000

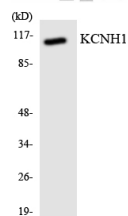
ELISA: 1: 5000

Not yet tested in other applications.

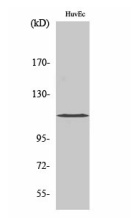
Images



Western blot analysis of KCNH1 Antibody. The lane on the right is blocked with the KCNH1 peptide.



Western blot analysis of the lysates from COLO205 cells using KCNH1 antibody.



Western Blot analysis of various cells using KCNHI Polyclonal Antibody diluted at 1:2000

Storage

-20°C for one year

501 Changsheng S Rd, Nanhu Dist, Jiaxing, Zhejiang, China

Tel: 86 21 31007137 | E-mail: save@bt-laboratory.com | www.bt-laboratory.com