

KCNT1 Polyclonal Antibody

Description

Product type	Primary Antibody
Code	BT-AP04777
Host	Rabbit
Isotype	IgG
Size	20ul, 50ul, 100ul
Immunogen	The antiserum was produced against synthesized peptide derived from human KCNT1. AA range:1019-1068
Mol wt	138343
Species reactivity	Human, Mouse, Rat
Clonality	Polyclonal
Recommended application	WB, IHC-p, ELISA
Concentration	1 mg/ml
Full name	KCNT1 Antibody
Synonyms	KCNT1; KIAA1422; Potassium channel subfamily T member 1; KCa4.1

This product is for research use only, not for use in human, therapeutic or diagnostic procedure.

Background

Potassium channels represent the most complex class of voltage-gated ion channels from both functional and structural standpoints. Their diverse functions include regulating neurotransmitter release, heart rate, insulin secretion, neuronal excitability, epithelial electrolyte transport, smooth muscle contraction, and cell volume. KCNT1 (potassium sodium-activated channel subfamily T member 1) encodes a sodium-activated potassium channel subunit which is thought to function in ion conductance and developmental signaling pathways. Mutations in KCNT1 cause the early-onset epileptic disorders, malignant migrating partial seizures of infancy and autosomal dominant nocturnal frontal lobe epilepsy. Alternative splicing results in multiple transcript variants.

Recommended Dilution

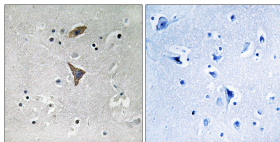
WB: 1: 500 - 1: 2000

IHC: 1: 100 - 1: 300

ELISA: 1: 10000

Not yet tested in other applications.

Images



Immunohistochemistry analysis of paraffin-embedded human brain tissue, using KCNT1 Antibody. The picture on the right is blocked with the synthesized peptide.

Storage

-20°C for one year