

SMAL1 Rabbit Polyclonal Antibody

Description

Product type	Primary Antibody
Code	BT-AP04781
Host	Rabbit
Isotype	IgG
Size	20ul, 50ul, 100ul
Immunogen	Synthesized peptide derived from human SMAL1
Mol wt	N/A
Species reactivity	Human, Mouse, Rat
Clonality	Polyclonal
Recommended application	WB
Concentration	1 mg/ml
Full name	SMAL1
Synonyms	SMAL1; SWI/SNF-related matrix-associated actin-dependent regulator of chromatin subfamily A-like protein 1; EC 3.6.4.-; HepA-related protein; hHARP; Sucrose nonfermenting protein 2-like 1

This product is for research use only, not for use in human, therapeutic or diagnostic procedure.

Background

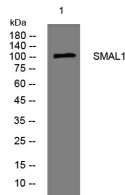
The protein encoded by this gene is a member of the SWI/SNF family of proteins. Members of this family have helicase and ATPase activities and are thought to regulate transcription of certain genes by altering the chromatin structure around those genes. The encoded protein shows sequence similarity to the E. coli RNA polymerase-binding protein HepA. Mutations in this gene are a cause of Schimke immunoosseous dysplasia (SIOD)| an autosomal recessive disorder with the diagnostic features of spondyloepiphyseal dysplasia| renal dysfunction| and T-cell immunodeficiency.

Recommended Dilution

WB: 1: 500 - 1: 2000

Not yet tested in other applications.

Images



Western blot analysis of lysates from 293T cells, primary antibody was diluted at 1:1000, 4°C overnight

Storage

-20°C for 1 year