

## Keratin 37/38 Polyclonal Antibody

### Description

<b>Product type</b>	Primary Antibody
<b>Code</b>	BT-AP04788
<b>Host</b>	Rabbit
<b>Isotype</b>	IgG
<b>Size</b>	20ul, 50ul, 100ul
<b>Immunogen</b>	The antiserum was produced against synthesized peptide derived from human KRT37/38. AA range:201-250
<b>Mol wt</b>	50490
<b>Species reactivity</b>	Human
<b>Clonality</b>	Polyclonal
<b>Recommended application</b>	WB, ELISA
<b>Concentration</b>	1 mg/ml
<b>Full name</b>	Keratin 37/38 Antibody
<b>Synonyms</b>	KRT37; HHA7; HKA7; KRTHA7; Keratin, type I cuticular Ha7; Hair keratin, type I Ha7; Keratin-37; K37; KRT38; HHA8; HKA8; KRTHA8; Keratin, type I cuticular Ha8; Hair keratin, type I Ha8; Keratin-38; K3

**This product is for research use only, not for use in human, therapeutic or diagnostic procedure.**

### Background

The protein encoded by KRT37 (keratin 37) is a member of the keratin gene family. As a type I hair keratin, it is an acidic protein which heterodimerizes with type II keratins to form hair and nails. The type I hair keratins are clustered in a region of chromosome 17q12-q21 and have the same direction of transcription.

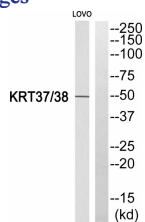
### Recommended Dilution

WB: 1: 500 - 1: 2000

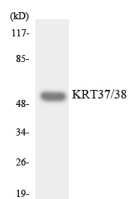
ELISA: 1: 5000

Not yet tested in other applications.

### Images



Western blot analysis of KRT37/38 Antibody. The lane on the right is blocked with the KRT37/38 peptide.



Western blot analysis of the lysates from HepG2 cells using KRT37/38 antibody.

## Storage

-20°C for one year

501 Changsheng S Rd, Nanhu Dist, Jiaxing, Zhejiang, China

Tel: 86 21 31007137 | E-mail: [save@bt-laboratory.com](mailto:save@bt-laboratory.com) | [www.bt-laboratory.com](http://www.bt-laboratory.com)