

## KG19 Polyclonal Antibody

### Description

Product type	Primary Antibody
Code	BT-AP04794
Host	Rabbit
Isotype	IgG
Size	20ul, 50ul, 100ul
Immunogen	The antiserum was produced against synthesized peptide derived from human BRI3B. AA range:1-50
Mol wt	27836
Species reactivity	Human, Mouse
Clonality	Polyclonal
Recommended application	WB, IHC-p, IF, ELISA
Concentration	1 mg/ml
Full name	KG19 Antibody
Synonyms	BRI3BP; KG19; BRI3-binding protein; I3-binding protein; Cervical cancer 1 proto-oncogene-binding protein KG19; HCCRBP-1

This product is for research use only, not for use in human, therapeutic or diagnostic procedure.

### Background

Involved in tumorigenesis and may function by stabilizing p53/TP53.

### Recommended Dilution

WB: 1: 500 - 1: 2000

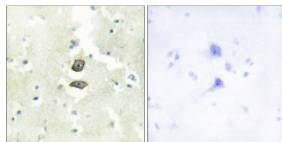
IHC: 1: 100 - 1: 300

IF: 1: 200 - 1: 1000

ELISA: 1: 20000

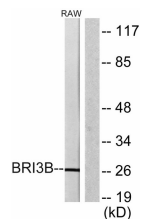
Not yet tested in other applications.

### Images



Immunohistochemistry analysis of paraffin-embedded human brain tissue, using BRI3B Antibody.

The picture on the right is blocked with the synthesized peptide.



Western blot analysis of lysates from RAW264.7 cells, using BRI3B Antibody. The lane on the right is blocked with the synthesized peptide.

### Storage

-20°C for one year