

SNF8 Rabbit Polyclonal Antibody

Description

Product type	Primary Antibody
Code	BT-AP04799
Host	Rabbit
Isotype	IgG
Size	20ul, 50ul, 100ul
Immunogen	Synthesized peptide derived from human SNF8
Mol wt	28380
Species reactivity	Human, Mouse, Rat
Clonality	Polyclonal
Recommended application	WB
Concentration	1 mg/ml
Full name	SNF8
Synonyms	SNF8

This product is for research use only, not for use in human, therapeutic or diagnostic procedure.

Background

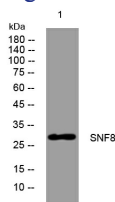
The protein encoded by this gene is a component of the endosomal sorting complex required for transport II (ESCRT-II) which regulates the movement of ubiquitinated transmembrane proteins to the lysosome for degradation. This complex also interacts with the RNA polymerase II elongation factor (ELL) to overcome the repressive effects of ELL on RNA polymerase II activity. Several transcript variants encoding different isoforms have been found for this gene.

Recommended Dilution

WB: 1: 500 - 1: 2000

Not yet tested in other applications.

Images



Western blot analysis of lysates from HpeG2 cells, primary antibody was diluted at 1:1000, 4°C overnight

Storage

-20°C for 1 year