

## KIAA0100 Polyclonal Antibody

### Description

<b>Product type</b>	Primary Antibody
<b>Code</b>	BT-AP04807
<b>Host</b>	Rabbit
<b>Isotype</b>	IgG
<b>Size</b>	20ul, 50ul, 100ul
<b>Immunogen</b>	The antiserum was produced against synthesized peptide derived from human KIAA0100. AA range:681-730
<b>Mol wt</b>	253700
<b>Species reactivity</b>	Human
<b>Clonality</b>	Polyclonal
<b>Recommended application</b>	IHC-p, IF, ELISA
<b>Concentration</b>	1 mg/ml
<b>Full name</b>	KIAA0100 Antibody
<b>Synonyms</b>	KIAA0100; BCOX1; UPF0378 protein KIAA0100; Antigen MLAA-22; Breast cancer-overexpressed gene 1 protein

This product is for research use only, not for use in human, therapeutic or diagnostic procedure.

### Background

KIAA0100, also named as BCOX1 and MLAA-22, belongs to the UPF0378 family. The antibody recognizes all the isoform of KIAA0100.

### Recommended Dilution

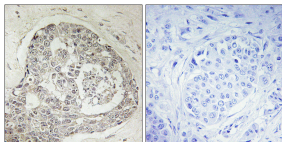
IHC: 1: 100 - 1: 300

IF: 1: 200 - 1: 1000

ELISA: 1: 20000

Not yet tested in other applications.

### Images



Immunohistochemistry analysis of paraffin-embedded human breast carcinoma, using K0100 Antibody. The picture on the right is blocked with the synthesized peptide.

### Storage

-20°C for one year