

KIF13B Polyclonal Antibody

Description

| | |
|--------------------------------|--|
| Product type | Primary Antibody |
| Code | BT-AP04808 |
| Host | Rabbit |
| Isotype | IgG |
| Size | 20ul, 50ul, 100ul |
| Immunogen | The antiserum was produced against synthesized peptide derived from human KIF13B. AA range:111-160 |
| Mol wt | 202666 |
| Species reactivity | Human |
| Clonality | Polyclonal |
| Recommended application | WB, IHC-p, ELISA |
| Concentration | 1 mg/ml |
| Full name | KIF13B Antibody |
| Synonyms | KIF13B; GAKIN; KIAA0639; Kinesin-like protein KIF13B; Kinesin-like protein GAKIN |

This product is for research use only, not for use in human, therapeutic or diagnostic procedure.

Background

May be involved in reorganization of the cortical cytoskeleton. May be functionally important for the intracellular trafficking of MAGUKs and associated protein complexes.

Recommended Dilution

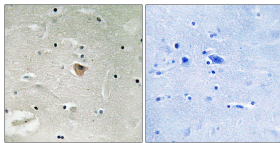
WB: 1: 500 - 1: 2000

IHC: 1: 100 - 1: 300

ELISA: 1: 5000

Not yet tested in other applications.

Images



Immunohistochemistry analysis of paraffin-embedded human brain, using KIF13B Antibody. The picture on the right is blocked with the synthesized peptide.

Storage

-20°C for one year

501 Changsheng S Rd, Nanhu Dist, Jiaxing, Zhejiang, China

Tel: 86 21 31007137 | E-mail: save@bt-laboratory.com | www.bt-laboratory.com