

## KIF4A Polyclonal Antibody

### Description

<b>Product type</b>	Primary Antibody
<b>Code</b>	BT-AP04813
<b>Host</b>	Rabbit
<b>Isotype</b>	IgG
<b>Size</b>	20ul, 50ul, 100ul
<b>Immunogen</b>	The antiserum was produced against synthesized peptide derived from human KIF4A. AA range:1171-1220
<b>Mol wt</b>	139881
<b>Species reactivity</b>	Human
<b>Clonality</b>	Polyclonal
<b>Recommended application</b>	WB, ELISA
<b>Concentration</b>	1 mg/ml
<b>Full name</b>	KIF4A Antibody
<b>Synonyms</b>	KIF4A; KIF4; Chromosome-associated kinesin KIF4A; Chromokinesin-A

**This product is for research use only, not for use in human, therapeutic or diagnostic procedure.**

### Background

KIF4A encodes a member of the kinesin 4 subfamily of kinesin related proteins. Chromosome-associated kinesin KIF4A is an ATP dependent microtubule-based motor protein that is involved in the intracellular transport of membranous organelles. This protein also associates with condensed chromosome arms and may be involved in maintaining chromosome integrity during mitosis. This protein may also be involved in the organization of the central spindle prior to cytokinesis. A pseudogene of this gene is found on chromosome X.

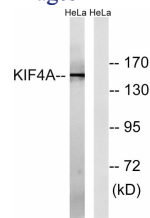
### Recommended Dilution

WB: 1: 500 - 1: 2000

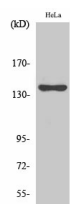
ELISA: 1: 40000

Not yet tested in other applications.

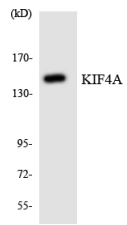
### Images



Western blot analysis of lysates from HeLa cells, using KIF4A Antibody. The lane on the right is blocked with the synthesized peptide.



Western Blot analysis of various cells using KIF4A Polyclonal Antibody diluted at 1:500



Western blot analysis of the lysates from HeLa cells using KIF4A antibody.

### Storage

-20°C for one year

501 Changsheng S Rd, Nanhu Dist, Jiaxing, Zhejiang, China

Tel: 86 21 31007137 | E-mail: [save@bt-laboratory.com](mailto:save@bt-laboratory.com) | [www.bt-laboratory.com](http://www.bt-laboratory.com)