

SO4C1 Rabbit Polyclonal Antibody

Description

Product type	Primary Antibody
Code	BT-AP04815
Host	Rabbit
Isotype	IgG
Size	20ul, 50ul, 100ul
Immunogen	Synthesized peptide derived from human SO4C1
Mol wt	79640
Species reactivity	Human, Mouse, Rat
Clonality	Polyclonal
Recommended application	WB
Concentration	1 mg/ml
Full name	SO4C1
Synonyms	SO4C1

This product is for research use only, not for use in human, therapeutic or diagnostic procedure.

Background

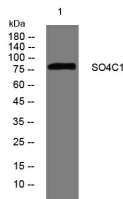
SLCO4C1 belongs to the organic anion transporter (OATP) family. OATPs are involved in the membrane transport of bile acids| conjugated steroids| thyroid hormone| eicosanoids| peptides| and numerous drugs in many tissues (Mikkaichi et al.| 2004

Recommended Dilution

WB: 1: 500 - 1: 2000

Not yet tested in other applications.

Images



Western blot analysis of lysates from HeLa cells, primary antibody was diluted at 1:1000, 4°C overnight

Storage

-20°C for 1 year

501 Changsheng S Rd, Nanhu Dist, Jiaxing, Zhejiang, China

Tel: 86 21 31007137 | E-mail: save@bt-laboratory.com | www.bt-laboratory.com