

KKIALRE Polyclonal Antibody

Description

Product type	Primary Antibody
Code	BT-AP04832
Host	Rabbit
Isotype	IgG
Size	20ul, 50ul, 100ul
Immunogen	The antiserum was produced against synthesized peptide derived from human CDKL1. AA range:281-330
Mol wt	41701
Species reactivity	Human, Rat
Clonality	Polyclonal
Recommended application	WB, IHC-p, ELISA
Concentration	1 mg/ml
Full name	KKIALRE Antibody
Synonyms	CDKL1; Cyclin-dependent kinase-like 1; Protein kinase p42 KKIALRE; Serine/threonine-protein kinase KKIALRE

This product is for research use only, not for use in human, therapeutic or diagnostic procedure.

Background

Cyclin-dependent kinase-like 1 is a member of a large family of CDC2-related serine/threonine protein kinases. It accumulates primarily in the nucleus. Two transcript variants encoding different isoforms have been found for CDKL1.

Recommended Dilution

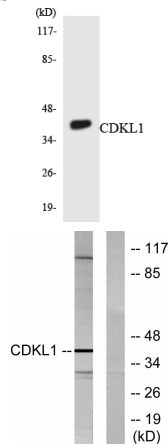
WB: 1: 500 - 1: 2000

IHC: 1: 100 - 1: 300

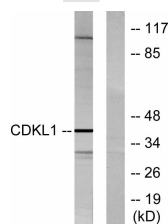
ELISA: 1: 10000

Not yet tested in other applications.

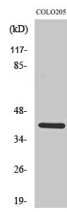
Images



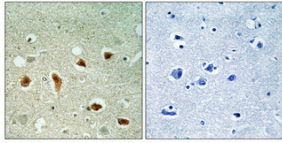
Western blot analysis of the lysates from COLO205 cells using CDKL1 antibody.



Western blot analysis of lysates from COLO205 cells, using CDKL1 Antibody. The lane on the right is blocked with the synthesized peptide.



Western Blot analysis of various cells using KKIALRE Polyclonal Antibody diluted at 1:500



Immunohistochemical analysis of paraffin-embedded Human brain. Antibody was diluted at 1:100(4° overnight). High-pressure and temperature Tris-EDTA,pH8.0 was used for antigen retrieval. Negative contrl (right) obtaned from antibody was pre-absorbed by immunogen peptide.

Storage

-20°C for one year

501 Changsheng S Rd, Nanhu Dist, Jiaxing, Zhejiang, China

Tel: 86 21 31007137 | E-mail: save@bt-laboratory.com | www.bt-laboratory.com