

KKIAMRE Polyclonal Antibody

Description

Product type	Primary Antibody
Code	BT-AP04833
Host	Rabbit
Isotype	IgG
Size	20ul, 50ul, 100ul
Immunogen	The antiserum was produced against synthesized peptide derived from human CDKL2. AA range:211-260
Mol wt	56019
Species reactivity	Human
Clonality	Polyclonal
Recommended application	WB, IHC-p, ELISA
Concentration	1 mg/ml
Full name	KKIAMRE Antibody
Synonyms	CDKL2; Cyclin-dependent kinase-like 2; Protein kinase p56 KKIAMRE; Serine/threonine-protein kinase KKIAMRE

This product is for research use only, not for use in human, therapeutic or diagnostic procedure.

Background

CDKL2 (cyclin dependent kinase like 2) product is a member of a large family of CDC2-related serine/threonine protein kinases. It accumulates primarily in the cytoplasm, with lower levels in the nucleus.

Recommended Dilution

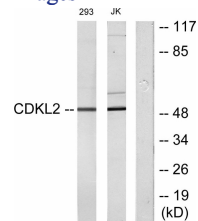
WB: 1: 500 - 1: 2000

IHC: 1: 100 - 1: 300

ELISA: 1: 10000

Not yet tested in other applications.

Images



Western blot analysis of lysates from Jurkat and 293 cells, using CDKL2 Antibody. The lane on the right is blocked with the synthesized peptide.

Storage

-20°C for one year