

KLF13 Polyclonal Antibody

Description

Product type	Primary Antibody
Code	BT-AP04838
Host	Rabbit
Isotype	IgG
Size	20ul, 50ul, 100ul
Immunogen	The antiserum was produced against synthesized peptide derived from human KLF13 around the non-acetylation site of Lys166. AA range:131-180
Mol wt	31180
Species reactivity	Human, Mouse
Clonality	Polyclonal
Recommended application	WB, IHC-p, ELISA
Concentration	1 mg/ml
Full name	KLF13 Antibody
Synonyms	KLF13; BTEB3; NSLP1; Krueppel-like factor 13; Basic transcription element-binding protein 3; BTE-binding protein 3; Novel Sp1-like zinc finger transcription factor 1;RANTES factor of late activated T-

This product is for research use only, not for use in human, therapeutic or diagnostic procedure.

Background

KLF13 belongs to a family of transcription factors that contain 3 classical zinc finger DNA-binding domains consisting of a zinc atom tetrahedrally coordinated by 2 cysteines and 2 histidines (C2H2 motif). These transcription factors bind to GC-rich sequences and related GT and CACCC boxes (Schohy et al. 2000 [PubMed: 11087666]).

Recommended Dilution

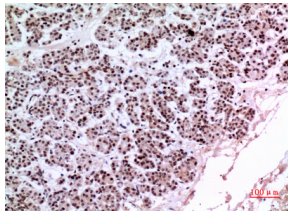
WB: 1: 500 - 1: 2000

IHC-p: 1: 100 - 1: 300

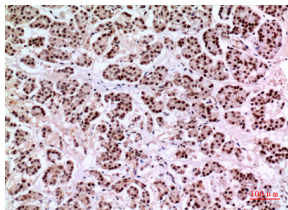
ELISA: 1: 20000

Not yet tested in other applications.

Images



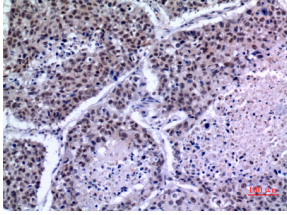
Immunohistochemical analysis of paraffin-embedded human-pancreas, antibody was diluted at 1:100



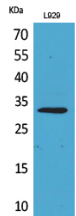
Immunohistochemical analysis of paraffin-embedded human-pancreas, antibody was diluted at 1:100



Western blot analysis of lysate from L929 cells, using KLF13 Antibody.



Immunohistochemical analysis of paraffin-embedded human lung, antibody was diluted at 1:100



Western Blot analysis of L929 cells using KLF13 Polyclonal Antibody. Secondary antibody was diluted at 1:20000 cells nucleus.

Storage

-20°C for one year

501 Changsheng S Rd, Nanhu Dist, Jiaxing, Zhejiang, China

Tel: 86 21 31007137 | E-mail: save@bt-laboratory.com | www.bt-laboratory.com