

KLF7 Polyclonal Antibody

Description

Product type	Primary Antibody
Code	BT-AP04842
Host	Rabbit
Isotype	IgG
Size	20ul, 50ul, 100ul
Immunogen	The antiserum was produced against synthesized peptide derived from human KLF7. AA range:171-220
Mol wt	33362
Species reactivity	Human, Mouse
Clonality	Polyclonal
Recommended application	WB, ELISA
Concentration	1 mg/ml
Full name	KLF7 Antibody
Synonyms	KLF7; UKLF; Krueppel-like factor 7; Ubiquitous krueppel-like factor

This product is for research use only, not for use in human, therapeutic or diagnostic procedure.

Background

The protein encoded by KLF7 (Kruppel like factor 7) is a member of the Kruppel-like transcriptional regulator family. Members in this family regulate cell proliferation, differentiation and survival and contain three C2H2 zinc fingers at the C-terminus that mediate binding to GC-rich sites. This protein may contribute to the progression of type 2 diabetes by inhibiting insulin expression and secretion in pancreatic beta-cells and by deregulating adipocytokine secretion in adipocytes. A pseudogene of KLF7 is located on the long arm of chromosome 3. Alternative splicing results in multiple transcript variants.

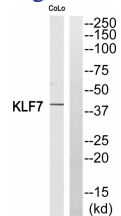
Recommended Dilution

WB: 1: 500 - 1: 2000

ELISA: 1: 5000

Not yet tested in other applications.

Images



Western blot analysis of KLF7 Antibody. The lane on the right is blocked with the KLF7 peptide.

Storage

-20°C for one year