

KLK1 Polyclonal Antibody

Description

Product type	Primary Antibody
Code	BT-AP04846
Host	Rabbit
Isotype	IgG
Size	20ul, 50ul, 100ul
Immunogen	The antiserum was produced against synthesized peptide derived from the Internal region of human KLK1. AA range:81-130
Mol wt	28820
Species reactivity	Human
Clonality	Polyclonal
Recommended application	WB, ELISA
Concentration	1 mg/ml
Full name	KLK1 Antibody
Synonyms	KLK1; Kallikrein-1; Kidney/pancreas/salivary gland kallikrein; Tissue kallikrein

This product is for research use only, not for use in human, therapeutic or diagnostic procedure.

Background

Kallikreins are a subgroup of serine proteases having diverse physiological functions. Growing evidence suggests that many kallikreins are implicated in carcinogenesis and some have potential as novel cancer and other disease biomarkers. KLK1 is one of the fifteen kallikrein subfamily members located in a cluster on chromosome 19. This protein is functionally conserved in its capacity to release the vasoactive peptide, Lys-bradykinin, from low molecular weight kininogen.

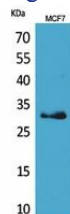
Recommended Dilution

WB: 1: 500 - 1: 2000

ELISA: 1: 20000

Not yet tested in other applications.

Images



Western Blot analysis of MCF7 cells using KLK1 Polyclonal Antibody. Secondary antibody was diluted at 1:20000

Storage

-20°C for one year