

## KPI-2 Polyclonal Antibody

### Description

<b>Product type</b>	Primary Antibody
<b>Code</b>	BT-AP04865
<b>Host</b>	Rabbit
<b>Isotype</b>	IgG
<b>Size</b>	20ul, 50ul, 100ul
<b>Immunogen</b>	The antiserum was produced against synthesized peptide derived from human LMTK2. AA range:651-700
<b>Mol wt</b>	164900
<b>Species reactivity</b>	Human
<b>Clonality</b>	Polyclonal
<b>Recommended application</b>	WB, IHC-p, IF, ELISA
<b>Concentration</b>	1 mg/ml
<b>Full name</b>	KPI-2 Antibody
<b>Synonyms</b>	LMTK2; AATYK2; BREK; KIAA1079; KPI2; LMR2; Serine/threonine-protein kinase LMTK2; Apoptosis-associated tyrosine kinase 2; Brain-enriched kinase; hBREK; CDK5/p35-regulated kinase; CPRK; Kinase/phosphat

**This product is for research use only, not for use in human, therapeutic or diagnostic procedure.**

### Background

The lemur tyrosine kinase 2 encoded by LMTK2 belongs to the protein kinase superfamily and the protein tyrosine kinase family. It contains N-terminal transmembrane helices and a long C-terminal cytoplasmic tail with serine/threonine/tyrosine kinase activity. This protein interacts with several other proteins, such as Inhibitor-2 (Inh2), protein phosphatase-1 (PP1C), p35, and myosin VI. It phosphorylates other proteins, and is itself also phosphorylated when interacting with cyclin-dependent kinase 5 (cdk5)/p35 complex. This protein involves in nerve growth factor (NGF)-TrkA signalling, and also plays a critical role in endosomal membrane trafficking. Mouse studies suggested an essential role of this protein in spermatogenesis.

### Recommended Dilution

WB: 1: 500 - 1: 2000

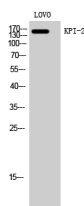
IHC: 1: 100 - 1: 300

IF: 1: 200 - 1: 1000

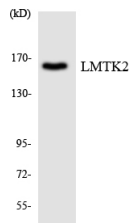
ELISA: 1: 20000

Not yet tested in other applications.

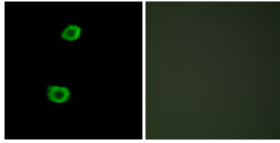
### Images



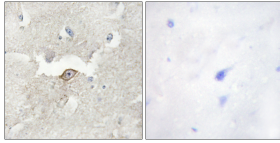
Western Blot analysis of LOVO cells using KPI-2 Polyclonal Antibody



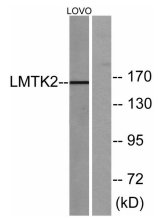
Western blot analysis of the lysates from COLO205 cells using LMTK2 antibody.



Immunofluorescence analysis of HepG2 cells, using LMTK2 Antibody. The picture on the right is blocked with the synthesized peptide.



Immunohistochemistry analysis of paraffin-embedded human brain tissue, using LMTK2 Antibody. The picture on the right is blocked with the synthesized peptide.



Western blot analysis of lysates from LOVO cells, using LMTK2 Antibody. The lane on the right is blocked with the synthesized peptide.

### Storage

-20°C for one year

501 Changsheng S Rd, Nanhu Dist, Jiaxing, Zhejiang, China

Tel: 86 21 31007137 | E-mail: [save@bt-laboratory.com](mailto:save@bt-laboratory.com) | [www.bt-laboratory.com](http://www.bt-laboratory.com)