

## SPTC2 Rabbit Polyclonal Antibody

### Description

<b>Product type</b>	Primary Antibody
<b>Code</b>	BT-AP04872
<b>Host</b>	Rabbit
<b>Isotype</b>	IgG
<b>Size</b>	20ul, 50ul, 100ul
<b>Immunogen</b>	Synthesized peptide derived from human SPTC2
<b>Mol wt</b>	N/A
<b>Species reactivity</b>	Human, Mouse
<b>Clonality</b>	Polyclonal
<b>Recommended application</b>	WB
<b>Concentration</b>	1 mg/ml
<b>Full name</b>	SPTC2
<b>Synonyms</b>	SPTC2; Serine palmitoyltransferase 2; EC 2.3.1.50; Long chain base biosynthesis protein 2; LCB 2; Long chain base biosynthesis protein 2a; LCB2a; Serine-palmitoyl-CoA transferase 2; SPT 2

This product is for research use only, not for use in human, therapeutic or diagnostic procedure.

### Background

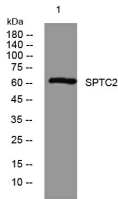
This gene encodes a long chain base subunit of serine palmitoyltransferase. Serine palmitoyltransferase| which consists of two different subunits| is the key enzyme in sphingolipid biosynthesis. It catalyzes the pyridoxal-5-prime-phosphate-dependent condensation of L-serine and palmitoyl-CoA to 3-oxosphinganine. Mutations in this gene were identified in patients with hereditary sensory neuropathy type 1.

### Recommended Dilution

WB: 1: 500 - 1: 2000

Not yet tested in other applications.

### Images



Western blot analysis of lysates from SH-SY5Y cells, primary antibody was diluted at 1:1000, 4°C overnight

### Storage

-20°C for 1 year