

SPTC3 Rabbit Polyclonal Antibody

Description

Product type	Primary Antibody
Code	BT-AP04873
Host	Rabbit
Isotype	IgG
Size	20ul, 50ul, 100ul
Immunogen	Synthesized peptide derived from human SPTC3
Mol wt	60720
Species reactivity	Human, Mouse
Clonality	Polyclonal
Recommended application	WB
Concentration	1 mg/ml
Full name	SPTC3
Synonyms	SPTC3

This product is for research use only, not for use in human, therapeutic or diagnostic procedure.

Background

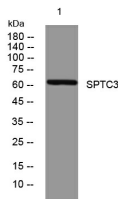
The SPTLC3 gene encodes an isoform of the third subunit of serine palmitoyltransferase (SPT; EC 2.3.1.50) which catalyzes the rate-limiting step of the de novo synthesis of sphingolipids (Homemann et al. 2006)

Recommended Dilution

WB: 1: 500 - 1: 2000

Not yet tested in other applications.

Images



Storage

-20°C for 1 year

501 Changsheng S Rd, Nanhu Dist, Jiaxing, Zhejiang, China

Tel: 86 21 31007137 | E-mail: save@bt-laboratory.com | www.bt-laboratory.com