

SPTN2 Rabbit Polyclonal Antibody

Description

Product type	Primary Antibody
Code	BT-AP04875
Host	Rabbit
Isotype	IgG
Size	20ul, 50ul, 100ul
Immunogen	Synthesized peptide derived from human SPTN2
Mol wt	262900
Species reactivity	Human, Rat
Clonality	Polyclonal
Recommended application	WB
Concentration	1 mg/ml
Full name	SPTN2
Synonyms	SPTN2

This product is for research use only, not for use in human, therapeutic or diagnostic procedure.

Background

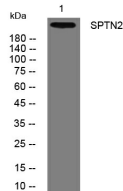
Spectrins are principle components of a cell's membrane-cytoskeleton and are composed of two alpha and two beta spectrin subunits. The protein encoded by this gene (SPTBN2) is called spectrin beta non-erythrocytic 2 or beta-III spectrin. It is related to but distinct from the beta-II spectrin gene which is also known as spectrin beta non-erythrocytic 1 (SPTBN1). SPTBN2 regulates the glutamate signaling pathway by stabilizing the glutamate transporter EAAT4 at the surface of the plasma membrane. Mutations in this gene cause a form of spinocerebellar ataxia [SCA5] that is characterized by neurodegeneration [progressive locomotor incoordination] dysarthria and uncoordinated eye movements.

Recommended Dilution

WB: 1: 500 - 1: 2000

Not yet tested in other applications.

Images



Western blot analysis of lysates from K562 cells, primary antibody was diluted at 1:1000, 4°C overnight

Storage

-20°C for 1 year