

## Ksr2 Polyclonal Antibody

### Description

Product type	Primary Antibody
Code	BT-AP04883
Host	Rabbit
Isotype	IgG
Size	20ul, 50ul, 100ul
Immunogen	The antiserum was produced against synthesized peptide derived from human KSR2. AA range:671-720
Mol wt	107632
Species reactivity	Human, Mouse
Clonality	Polyclonal
Recommended application	WB, IHC-p, IF, ELISA
Concentration	1 mg/ml
Full name	Ksr2 Antibody
Synonyms	KSR2; Kinase suppressor of Ras 2; hKSR2

This product is for research use only, not for use in human, therapeutic or diagnostic procedure.

### Background

Location-regulated scaffold connecting MEK to RAF. Blocks MAP3K8 kinase activity and MAP3K8-mediated signaling. Acts as a negative regulator of MAP3K3-mediated activation of ERK, JNK and NF-kappa-B pathways, inhibiting MAP3K3-mediated interleukin-8 production.

### Recommended Dilution

WB: 1: 500 - 1: 2000

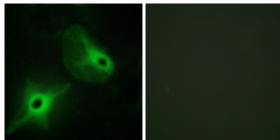
IHC: 1: 100 - 1: 300

IF: 1: 200 - 1: 1000

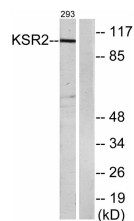
ELISA: 1: 40000

Not yet tested in other applications.

### Images



Immunofluorescence analysis of HeLa cells, using KSR2 Antibody. The picture on the right is blocked with the synthesized peptide.



Western blot analysis of lysates from 293 cells, using KSR2 Antibody. The lane on the right is blocked with the synthesized peptide.

### Storage

-20°C for one year