

SRBS2 Rabbit Polyclonal Antibody

Description

Product type	Primary Antibody
Code	BT-AP04884
Host	Rabbit
Isotype	IgG
Size	20ul, 50ul, 100ul
Immunogen	Synthesized peptide derived from human SRBS2
Mol wt	121000
Species reactivity	Human, Mouse, Rat
Clonality	Polyclonal
Recommended application	WB
Concentration	1 mg/ml
Full name	SRBS2
Synonyms	SRBS2

This product is for research use only, not for use in human, therapeutic or diagnostic procedure.

Background

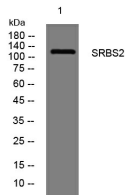
Arg and c-Abl represent the mammalian members of the Abelson family of non-receptor protein-tyrosine kinases. They interact with the Arg/Abl binding proteins via the SH3 domains present in the carboxy end of the latter group of proteins. This gene encodes the sorbin and SH3 domain containing 2 protein. It has three C-terminal SH3 domains and an N-terminal sorbin homology (SoHo) domain that interacts with lipid raft proteins. The subcellular localization of this protein in epithelial and cardiac muscle cells suggests that it functions as an adapter protein to assemble signaling complexes in stress fibers and that it is a potential link between Abl family kinases and the actin cytoskeleton. Alternative splicing results in multiple transcript variants encoding different isoforms.

Recommended Dilution

WB: 1: 500 - 1: 2000

Not yet tested in other applications.

Images



Western blot analysis of lysates from HuvEc cells, primary antibody was diluted at 1:1000, 4°C overnight

Storage

-20°C for 1 year